

Invitation to Artists



Qualifications are sought from public artists interested in the commission of artwork for the University of Oregon's Health and Counseling Center

The Selection Committee for the University Health and Counseling Center (UHCC) is seeking artwork that welcomes the student users and enriches their experience of the Health and Counseling Center as a pleasant, comfortable and healing environment. Areas under consideration are the north entrance lobby area and two interior courtyards. Sustainable, natural and local materials are encouraged whenever possible. The Committee expressed particular interest in the use and integration of language as a design element. Exploration and expression of traditional methods of healing along with contemporary applications may also provide a point of departure for artists. The Committee is interested in art that provides another opportunity for healing.

University Health and Counseling Center Building

The expansion and renovation of University of Oregon's Health and Counseling Center building is the first major expansion of the facility since opening in 1965. The new facility balances both program areas, unifying the structure into a coherent and appropriately designed student-focused health facility, while maintaining the unique and separate identities of the two departments housed under its roof, the University Health Center and the Counseling and Testing Center. This will result in a comprehensive care facility that addresses the needs of the entire student population. The building has been designed to comply with state and university policies for universal access, sustainability and energy efficiency.

University Health Counseling and Testing Center Program

Vibrant health and self-awareness are cornerstones for personal growth, academic success and community development that help fulfill the UHCC's mission of improved quality of life for students and the broader community. The UHCC emphasizes education by empowering students to be partners in their own wellbeing.

The Center offers a holistic approach to health and wellness that recognizes the physical, mental, environmental, social and spiritual aspects influencing student development. The remodeled facility will provide primary care out patient services, education and campus outreach in health promotion and disease prevention, as well as counseling and testing services to meet the diverse needs of students. The UHCTC offers accessible, compassionate and confidential quality health care from professional staffs that act as resources and motivational agents for positive life change and expert health care services.

Student Health Services

Primarily a health care clinic, the University Health program offers state of the art health care medical services in addition to dental, laboratory, X-ray and pharmaceutical services, sports medicine and physical therapy, health education services, nutritional counseling, travel clinic, women's health care, and peer education programs. Through the promotion of lifelong healthy attitudes and practices, students are aided in maintaining optimum health while achieving academic and personal goals.

Counseling and Testing Center

The Counseling and Testing Center provides comprehensive mental health and testing services to UO students. Their mission is to: facilitate each student's development through a variety of counseling services; develop and maintain a positive psychological climate on campus; train future professionals in the fields of clinical and counseling psychology and related fields; and provide assessment of student placement and academic progress by administration and interpretation of subject tests, entrance exams, psychological profiles, career assessments, and national testing programs.

Budget

The approximate budget for University Health and Counseling Center is \$67,000, which will include artist fees, fabrication, insurance, shipping, travel, installation, documentation, and other project costs. This budget may be divided between multiple sites.

Eligibility

Open to all artists or artist teams.

Deadline

Complete applications must be *received* either by mail or in the Oregon Arts Commission office no later than 5pm on March 1, 2006. Late or incomplete applications will not be accepted.

Selection Process

Applications will be reviewed by the Art Selection Committee. The Committee is only interested in reviewing artists' past work at this time. A short list of finalists may be invited to present a detailed proposal for which they will be paid a design fee.

Art Zones

Zone 1: North Entry Lobby

The North Entry Lobby Area is the main entrance to the UHCC's many services and programs. This highly public space sets the character and intent of the building by providing a transition into a secure and supportive place.

The front doors open into a well-lit two-story atrium with full glazing on the north and west walls creating an ideal opportunity for a ceiling suspended work, preferably kinetic. Materials may include: fiber, plastics, and other materials that do not reduce light transmission.

Freestanding work of smaller scale, integrated into the space, will also be considered.

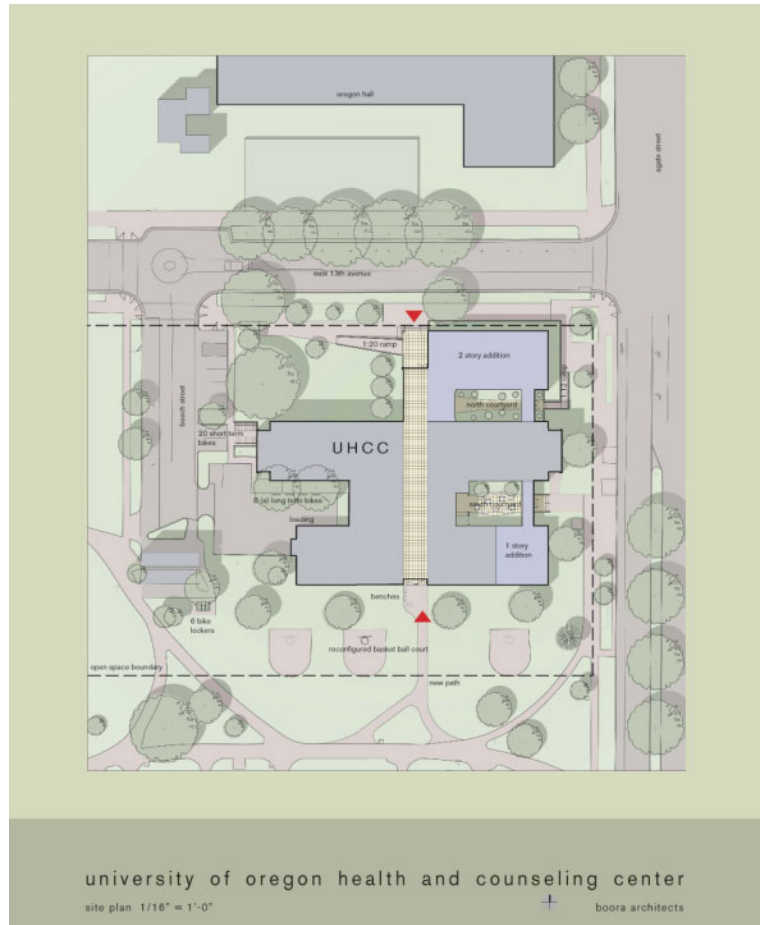
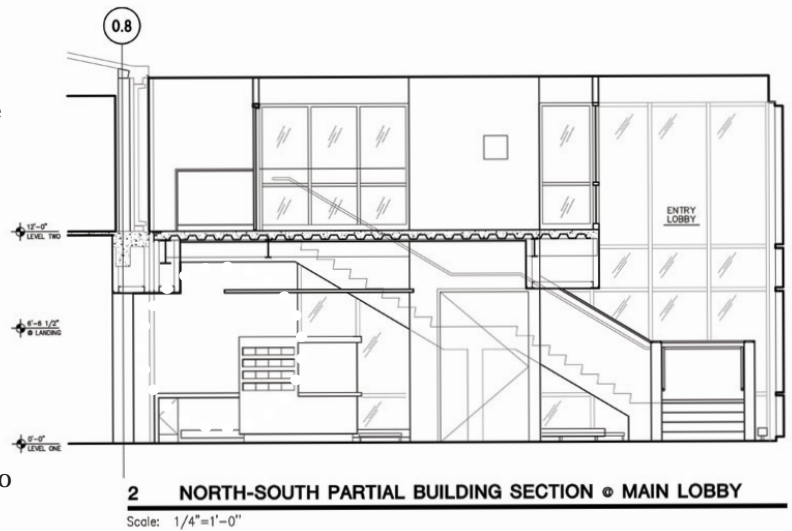
Approximate dimensions in the two story volume area are 24' 9" x 9'3"

Zone 2: North and South Interior Courtyards

These courtyards provide viewing from some internal spaces while also allowing light to penetrate into the buildings interior. Artwork in these more secluded public areas will provide the building users a tranquil area of reflection. Opportunities include: water or sculptural elements, medicinal garden plantings, wall mounted sculpture or relief work of metal, tile, glass or other durable material. A variation in scale is desirable.

North Court yard is 44'9"x 20'6". Although it is intended as a viewing garden only, it can be traversed. The central path is a narrow gravel lined walk with potted bamboo on either side.

South Court yard is an active space measuring 36'x29'. The central area is composed of concrete pavers and surrounded by plantings.



Selection Criteria

Qualifications will be reviewed with the following criteria:

50% Artistic and technical quality of past work
25% Appropriateness of scale, material, style of past work to this project
25% Artist's professional experience as indicated by resume

Selection Committee:

Cathy Soutar, Project Manager,
University of Oregon
Truman Baird, Oregon University System
Calvert Helms, Boora Architects Inc.
Larry Gilbert, CMGS Landscape Architects
Gwen Jansen, Health and
Counseling Center
Anne Mattson, Health and
Counseling Center
David Turner, Director,
Jordan Schnitzer Museum of Art
Analee Fuentes, Department of Art,
Linn-Benton CC
Dan Bentley, Student

For More Information

To learn more about the University Health and Counseling Center go to their website at www.healthcenter.uoregon.edu .

Visit the Arts Commission website at www.oregonartscommission.org or contact Saralyn Hilde, Public Art Project Manager: (541) 754-7116, mshilde@comcast.net

This public art project is made possible through Oregon's Percent for Art in Public Places program [ORS 276.073-090]. This information is available in alternate formats upon request.

Materials submitted must include the following:

- ❑ Artist Resume- Please limit to 2 pages per person and include a daytime telephone number and address.
- ❑ Self-Addressed, Stamped Envelope. In order to safely return your materials, enclose an envelope no smaller than 5"x 7".
- ❑ Up to ten(10) slides for individual artists, up to fourteen(14) for teams. Please label with artist's name, title of work, date and identification number corresponding to the slidesheet and indicate the top of the slide. Please submit 2" x 2" slides in a 9" x 11" plastic slide sheet. Slides will be viewed two at a time.
- ❑ Corresponding Slide Identification Sheet: Include title, date of completion, material(s), size, the budget or purchase price and any other relevant information or narrative.

Documentation Specifications:

- **ALL** materials should be clearly labeled.
- *Please* do not staple or bind materials.
- Oversized materials and models will not be accepted.
- Submit all written materials single-sided on white 8 ½" x 11" paper so they may be clearly photocopied.
- Never send your originals.

Materials should be addressed or delivered to:

Oregon Arts Commission
Attn: UOHCC
775 Summer St, NE, Suite 200
Salem, OR 97301-1284